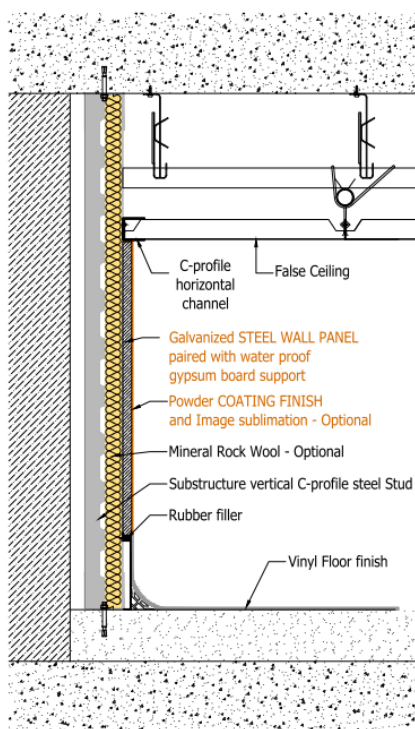
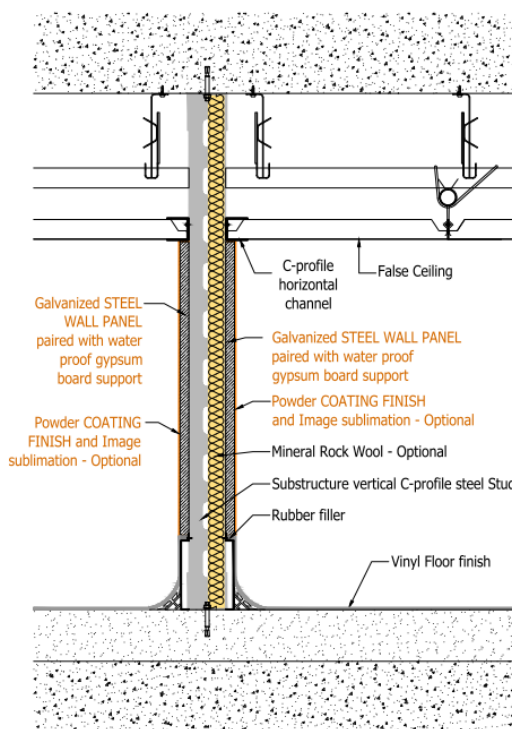


Galvanized Steel Modular Wall Panels



**SINGLE SIDE
G.I. STEEL PANELS' WALL**



**DOUBLE SIDE
STEEL PANELS' WALL**

Description:

Transforma provides a modular wall panel system designed and manufactured for specific use in operation rooms and other areas in hospitals; the panels are manufactured with high precision using Galvanized Steel ST02 with Zinc Z275 coating and chromate surface treatment with an antimicrobial powder coated surface finish resistant to living organisms and chemical substances.

Dimensions	
Panel Width	Max. 1,190 mm
Panel Height	Max. 3,000 mm (Room height)
Panel Thickness	14 mm and 20 mm
Steel thickness	1 mm and 0.8 mm

Technical Data	
Panel Composition	Anti-Microbial powder coating; Activity reduction: 99.8%
	Galvanized Steel ST02 with Zinc Z275 coating and chromate surface treatment; 1mm and 0.8 mm thickness
	Anti-Humidity or Anti-Fire gypsum plasterboard; 12.5 mm and 15 mm thickness
Surface finish options	Powder coating with colored RAL finish; according to standard colors chart *
	Printing of design images on powder coating; sublimation process
Fixture method	Screws on Galvanized Steel supporting structure
Fixture covering	Silicone gasket

*: The standard RAL colors are

WHITE	RAL 9003		DARK BLUE	RAL 5012	
PINK	RAL 3015		LIGHT BLUE	RAL 240 80 20	
PURPLE	RAL 4005		ORANGE	RAL 1037	
DARK GREEN	RAL 6000		YELLOW	RAL 1018	
LIGHT GREEN	RAL 6019		BEIGE	RAL 1001	

The above basic colors are indicative as reference, but Transforma is eager to propose a design combination based on the colors you select, especially in case of strong/dark hues preference, recommended to alternate with white or light colors

Standards & Certification:

- Quality certification: complies to European standard UNI EN ISO 9001:2008
- Anti-Microbial coating: ISO 22196:2007 reduction of 99.8% performed on K. Pneumonia
- Material complies to European Standard EN 520: 2004 + A1: 2009UNI EN ISO 10346: 2011