

Item: Lounge Seating Systems - Pouf

Item: K2

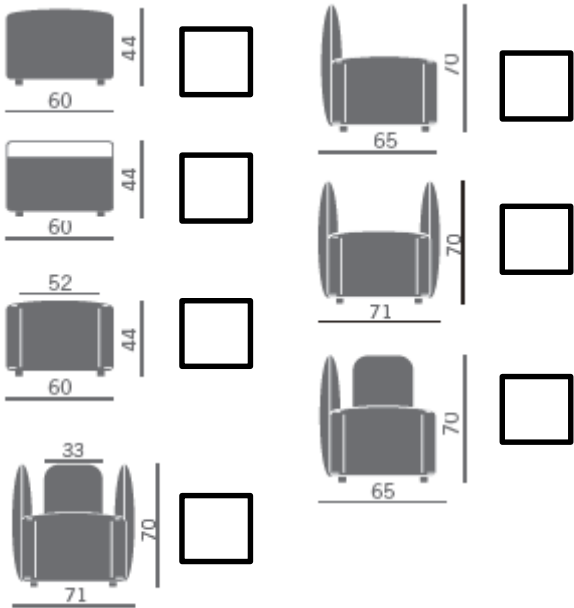
Description:

Poufs modular system composed of:

- Cylindrical element;
- Cylindrical element with support top;
- Shaped element;
- Shaped element with side supports.

On antislip glides, in one-color or two colors version.

Options Dimenions (in cm):



Remarks / Upholstery selected:



Upholstered Options:
See sheet
-D – EXTREMA/AU
-EXTREMA IKON

Elements:



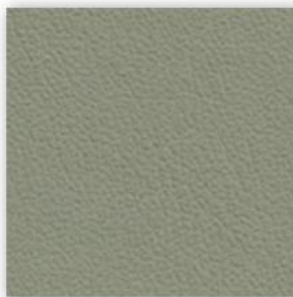
☐ Upholstered in one color

☐ Upholstered in two colors

Upholsteries: D – EXTREMA/AU



D 420



D 426



D 430



D 427



D 432



D 422



D 425



D 428 (Dark brown)



D 431



D 421



D 423



D 424



D 429

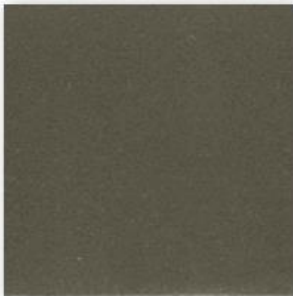
Upholsteries: D – EXTREMA IKON



D 470



D 471



D 472



D 473



D 473



D 474



D 475



D 476



D 477



D 478



D 479



D 480 (Dark brown)



D 481



D 482