

Item: Clinical Wall System – Aluminum and Laminated
Technical Wall
Item: PQ

Ref. GIV

Description:

The structure is extruded aluminum
perimeter frame, with fiberboard
panels plated on both sides by high
pressure plastic laminate.

Containers are compact, crushproof,
washable and disinfectable.



Worktop Material Options:

☐

SS

☐

Bilaminate

☐

Corian

☐

Bilaminate

Top whit:

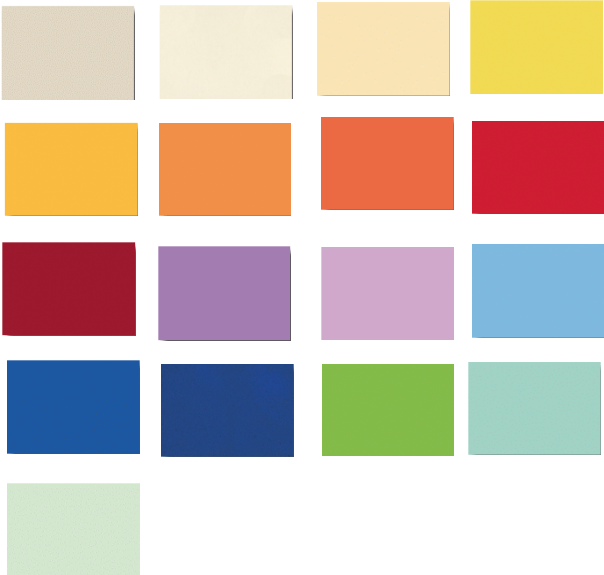
☐

Drip Edge

Color of Small Drawers Options:



Color of Big Doors and Big Drawers
Options:



Remarks/Finish :
